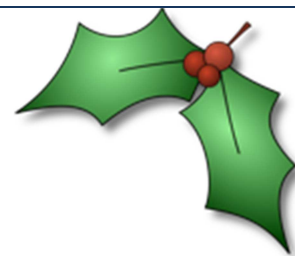


BAYS Christmas Special



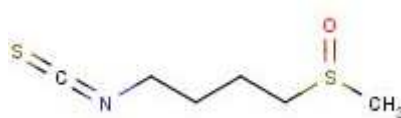
Can you give a 2 minute presentation on a theme which links Science/STEM and Christmas?

Come and present or listen to contributions of both staff and students.



Sulforaphane ($C_6H_{11}NOS_2$) is the compound found in brussel sprouts which is created by the breakdown of members of the glucosinolate family of compounds when the plant is damaged.

Sulforaphane is the primary compound responsible for the unpleasant sulfurous smell when Brussel sprouts are overcooked. For some people, it can give a very unpleasant bitter taste.



Do you have any Christmas trivia to discuss?

Tuesday 16th December 2014

4-5pm in Science at Bishop Wordsworth's School